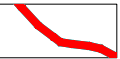




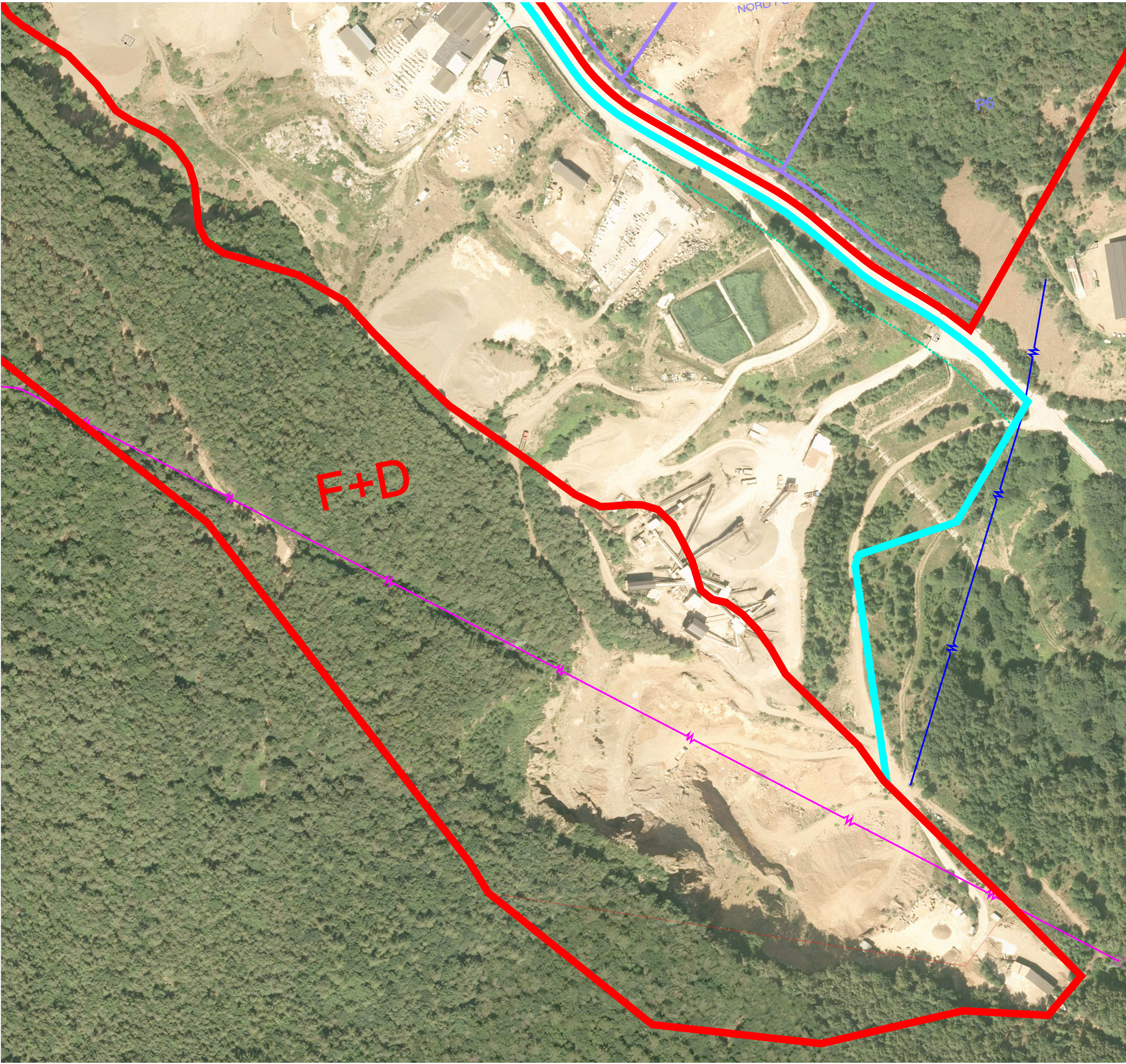


legenda :

- Limite area P.P.U.S.M. 
- Linee elettrica 70.000 volt 
- Linee elettrica 20.000 volt 
- Ortofoto Pat 2015 
- Mappa catastale C.C. Cembra 
- Limite area rispetto stradale 



COMUNE DI CEMBRA
LISIGNAGO



PROVINCIA AUTONOMA
DI TRENTO

AREA ESTRATTIVA CEMBRA "VAL SCORZAI"

PROGETTO :

"PROGRAMMA PLURIENNALE DI
ATTUAZIONE "

TITOLO TAVOLA :

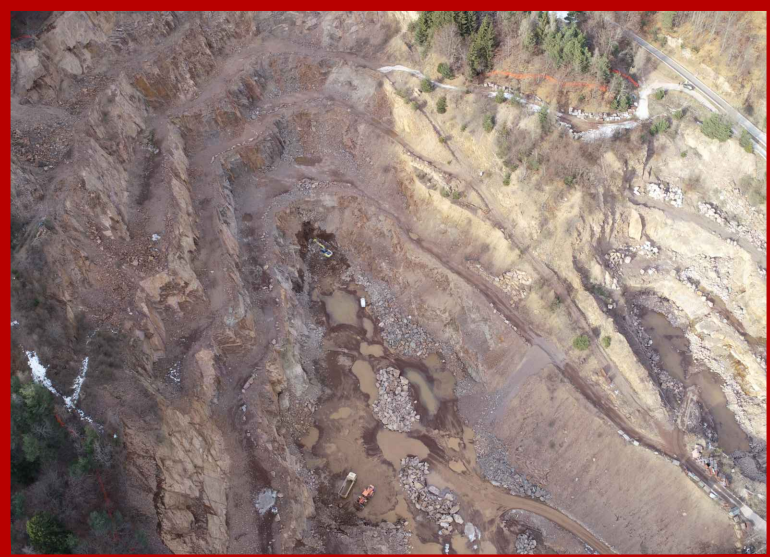
TAVOLA LINEE ELETTRICHE
CON ORTOFOTO

N TAVOLA :

0.11

DATA :

12-12-2024



SCALA :

1 : 1000

IL COMMITTENTE :

" Comune di Cembra Lisignago "

IL PROGETTISTA :



Collezione Albo
N. 231
LUCIOLE MASE



Geometra
Walter Harrell